



# Grinder Tips

...for Tub and Horizontal Machines





Recycling and Forestry

# Premium replacement parts for your tub or horizontal grinder!

## KenCoat™

***Kennametal carbide overlay  
application technology!***

- less downtime
- provides up to 30% greater wear life versus competitive embedded-style tips
- holds original shape longer to provide better and more consistent performance

## KenCast™

***Best for asphalt, shingle, and  
other extreme applications!***

- superior wear and fracture resistance
- combines the hardness of Kennametal's cemented tungsten carbide with the toughness of air-hardening steel

## Brazed-On Carbide

***Unmatched in the industry!***

- produces more material at day's end
- premier-quality macrocrystalline tungsten carbide inserts, brazed onto an all-steel body; stay securely in place
- ideal for grinding big, clean wood material



To place an order, contact Kennametal or your authorized Kennametal distributor.

# Grinder Tips

## TABLE OF CONTENTS BY MACHINE MANUFACTURER

<b>Bandit®</b> .....	2
<b>CBI® / CMI® / Rexworks® / Norkot®</b> .....	3
<b>Diamond Z® / Hogzilla® / W.H.O.® / FHE®</b> .....	4
<b>DuraTech®</b> .....	5
<b>Morbark®</b> .....	6-7
<b>Peterson®</b> .....	8-9
<b>Vermeer®</b> .....	10-11
<b>Precision Husky® / Toro® / Olathe®</b> .....	12
<b>Packer® / Rayco® / FAE® / ZEHR®</b> .....	13
<b>Weld-On Accessories</b> .....	13

**Kennametal Inc. encourages the safe use of its products.**

**To help avoid personal injury or damage to tools, please:**

- wear approved personal protection equipment, including eye and ear protection, steel-toed shoes, hard hat, and vest
- make sure tools are properly seated and securely retained
- do not strike tools with metal objects – carbide tips could shatter
- exercise care when removing tools
- inspect tools daily. do not use dull, cracked, burred, or bent tools
- operate all machines with safety in mind
- stand clear of machines in use, and make sure protective guards are in place
- do not change tools when the drum is moving or still engaged

Bandit

CBI / CMI /  
Rexworks / Norkot

Diamond Z / Hogzilla /  
W.H.O. / FHE

Duratech

Morbark

Peterson

Vermeer

Precision Husky /  
Toro / Olathe

Packer / Rayco /  
FAE / ZEHR

**Model  
Beast**

Part/Order Number  
**1611563 Flat Cutter**  
• abrasion-resistant  
**2041399 Flat Cutter**  
• impact-resistant



Lock Nut Part/Order Number **3525659**

**Model  
Beast**

Part/Order Number  
**1850966 Splitter**  
• abrasion-resistant  
**2041397 Splitter**  
• impact-resistant



Lock Nut Part/Order Number **3525659**

**Model  
Beast**

Part/Order Number  
**1998957 Shingle Splitter**  
• abrasion-resistant  
**2040927 Shingle Splitter**  
• impact-resistant



Lock Nut Part/Order Number **3525659**

**Model  
Beast**

Part/Order Number  
**1999845 Shingle Fan**  
• 2" fan  
• KenCast technology  
• non-rotating



Lock Nut Part/Order Number **3525659**

**Model  
Beast**

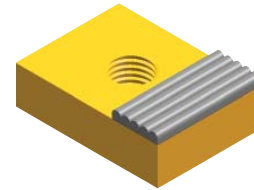
Part/Order Number  
**1594658 Bullet Bit**  
• exceptionally durable



Lock Nut Part/Order Number **3525659**

**Model  
Beast**

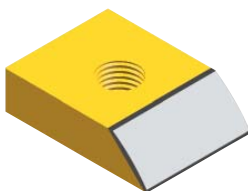
Part/Order Number  
**1931025 Raker**  
• 3/4" x 2" x 2.8"  
• KenCoat overlay  
• 3/4" – 10 UNC thread



Bolt Part/Order Number **3668832**

**Model  
Beast**

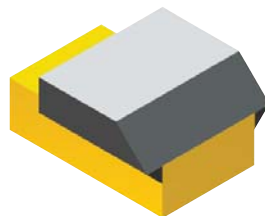
Part/Order Number  
**2034671 Raker**  
• beveled edge  
• 3/4" – 10 UNC thread



Bolt Part/Order Number **3668832**

**Model  
Beast**

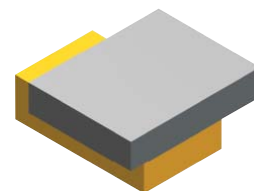
Part/Order Number  
**1999848 Raker**  
• KenCast technology with beveled edge  
• 3/4" – 10 UNC thread



Bolt Part/Order Number **3668832**

**Model  
Beast**

Part/Order Number  
**2450150 Single Raker**  
• KenCast technology with squared edge  
• 3/4" – 10 UNC thread

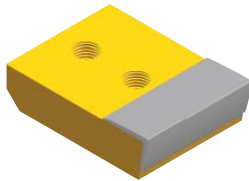


Bolt Part/Order Number **3668832**

see fasteners on page 12

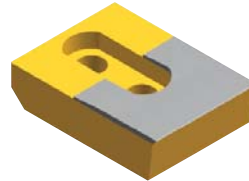
**Model** CBI  
4800 / 5060

**Part/Order Number**  
**2040751 Striker**  
• 8" x 5-7/8" x 2-1/4" (1-1/4" – 7 thread)  
• 2-side KenCoat overlay



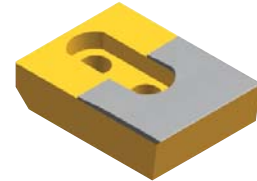
**Model** CBI  
4800 / 5060

**Part/Order Number**  
**2043404 Striker**  
• 8" x 5-7/8" x 2" (1-5/16" holes)  
• KenCast technology



**Model** CBI  
4800 / 5060

**Part/Order Number**  
**2652332 Striker**  
• 9" x 5-7/8" x 2" (1-5/16" holes)  
• KenCast technology



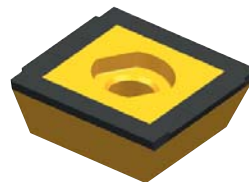
**Model** CMI / Rexworks / Norkot  
Maxi / Biogrind

**Part/Order Number**  
**1837762 (shown)**  
• 2.5" x 2.5"  
• 4-edge KenCoat overlay (5/8" ID)  
**1837761 (MTO)**  
• 2.5" x 2.5"  
• 2-edge KenCoat overlay (5/8" ID)



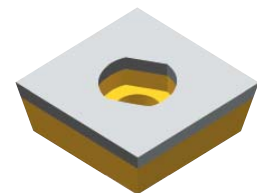
**Model** CMI / Rexworks / Norkot  
Maxi / Biogrind

**Part/Order Number**  
**1837823 (shown)**  
• 2.5" x 2.5"  
• 4-edge brazed-on carbide inserts (5/8" ID)  
**1837824**  
• 2.5" x 2.5"  
• 2-edge brazed-on carbide inserts (5/8" ID)



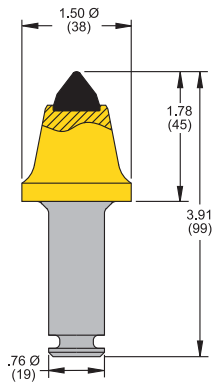
**Model** CMI / Rexworks / Norkot  
Maxi / Biogrind

**Part/Order Number**  
**1012625 (shown)**  
• 2.5" x 2.5"  
• KenCast technology (5/8" ID)  
**2260875**  
• 2.5" x 2.5"  
• KenCast technology (3/4" ID)



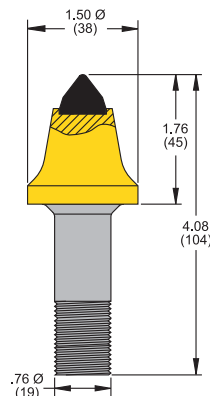
**Model** CMI / Rexworks / Norkot  
Maxi / Biogrind

**Part/Order Number**  
**1010910 C3R Tool**  
• for soft to medium or abrasive cutting conditions



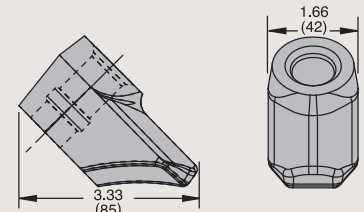
**Model** CMI / Rexworks / Norkot  
Maxi / Biogrind

**Part/Order Number**  
**1010734 C3T Tool**  
• for soft to medium or abrasive cutting conditions  
• threaded nut included



**Model** CMI / Rexworks / Norkot  
Maxi / Biogrind

**Part/Order Number**  
**1886760 C3RB Block**  
• for heavy-duty applications



**Model** CMI / Rexworks / Norkot  
Maxi / Biogrind

**Part/Order Number**  
**1012120 C3R Retainer**  
• lock ring



see fasteners on page 12

Bandit

CBI / CMI /  
Rexworks / Norkot

Diamond Z / Hogzilla /  
W.H.O. / FHE

Duratech

Morbark

Peterson

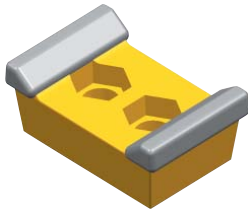
Vermeer

Precision Husky /  
Toro / Olathe

Packer / Rayco /  
FAE / ZEHR

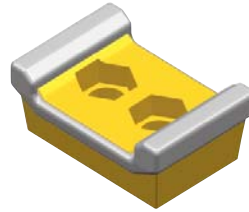
**Model All** Diamond Z / Hogzilla

- Part/Order Number 1835079 (shown)**
- 2-bolt – 2" on centers
  - 3.5" x 5.5"
  - 4-side KenCoat overlay with corners
- 2993224**
- 2-bolt – 2" on centers
  - 3.5" x 5.5"
  - 4-side KenCoat overlay without corners



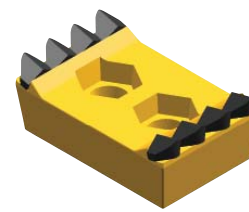
**Model All** Diamond Z / Hogzilla

- Part/Order Number 1930338 (shown)**
- 2-bolt – 2" on centers
  - 3.5" x 5.5"
  - 6-side KenCoat overlay
- 2434936**
- 2-bolt – 2" on centers
  - 3.5" x 5.5"
  - 8-side KenCoat overlay with face



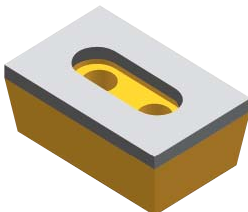
**Model All** Diamond Z / Hogzilla

- Part/Order Number 2046932 Ripper (shown)**
- 2-bolt – 2" on centers
  - 3.5" x 5.4"
  - abrasion-resistant
- 2394828 Ripper**
- 2-bolt – 2" on centers
  - 3.5" x 5.4"
  - impact-resistant



**Model All** Diamond Z / Hogzilla

- Part/Order Number 1981905**
- 2-bolt – 2" on centers
  - 3.5" x 5.5"
  - KenCast technology



**Model All** Hogzilla

- Part/Order Number 3776434**
- 2-bolt – 1-5/8" on centers
  - 2.9" x 4.3"
  - 6-side KenCoat overlay



**KenCast tip**  
after more than 40 hours of  
highly abrasive shingle grinding –  
shows only moderate wear!



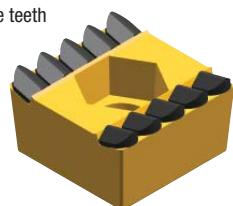
**Model P-10-12** W.H.O. / FHE

- Part/Order Number 2034217 (shown)**
- 1-bolt
  - 3" x 3"
  - 8-side KenCoat overlay with face and sides
- 1611573**
- 1-bolt
  - 3" x 3"
  - 6-side KenCoat overlay with face



**Model P-10-12** W.H.O. / FHE

- Part/Order Number 2264823 Ripper (shown)**
- 1-bolt
  - 2.7" x 2.7"
  - impact-resistant
  - 10 carbide teeth
- 2254784 Ripper**
- for super-aggressive cutting
  - 1-bolt
  - 2.7" x 2.7"
  - impact-resistant
  - 6 carbide teeth



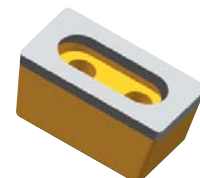
**Model P-10-12** W.H.O. / FHE

- Part/Order Number 1931517**
- 2-bolt – 1-5/16" on centers
  - 2" x 3.5"
  - 6-side KenCoat overlay
  - 1.5" mounted



**Model P-10-12** W.H.O. / FHE

- Part/Order Number 1323300**
- 2-bolt – 1-5/16" on centers
  - 2" x 3.5"
  - KenCast technology
  - 1.5" mounted



see fasteners on page 12

**Model**  
**3010 / 4012**
**Part/Order Number**  
**2034217 (shown)**

- 1-bolt
- 3" x 3"
- 8-side KenCoat overlay with face and sides

**1611573**

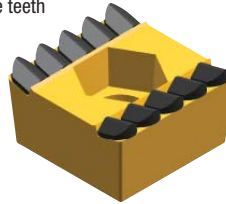
- 1-bolt
- 3" x 3"
- 6-side KenCoat overlay with face


**Model**  
**3010 / 4012**
**Part/Order Number**  
**2264823 Ripper (shown)**

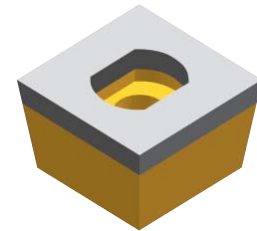
- 1-bolt
- 2.7" x 2.7"
- impact-resistant
- 10 carbide teeth

**2254784 Ripper**

- for super-aggressive cutting
- 1-bolt
- 2.7" x 2.7"
- impact-resistant
- 6 carbide teeth


**Model**  
**3010 / 4012**
**Part/Order Number**  
**1313612 (MTO)**

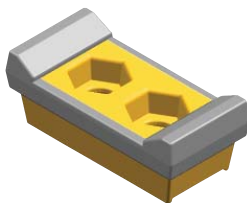
- 1-bolt
- 3" x 3"
- KenCast technology


**Model**  
**HD 8-12**
**Part/Order Number**  
**2402073 (shown)**

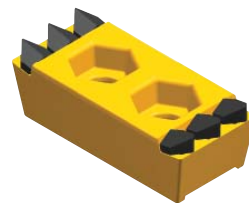
- 2-bolt – 1-1/2" on centers
- 2.3" x 4.5"
- 6-side KenCoat overlay with rails

**2402030**

- 2-bolt – 1-1/2" on centers
- 2.3" x 4.5"
- 8-side KenCoat overlay with face and rails


**Model**  
**HD 8-12**
**Part/Order Number**  
**3788583 Ripper**

- 2-bolt – 1-1/2" on centers
- 1.9" x 4.1"
- 2-side brazed with rails



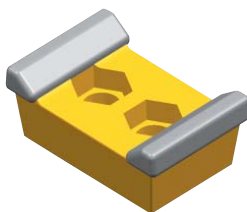
Log on to  
[www.kennametal.com](http://www.kennametal.com)  
 to learn more about our  
 complete line of products  
 and services.

**Model**  
**Horizontal Grinders**
**Part/Order Number**  
**1835079 (shown)**

- 2-bolt – 2" on centers
- 3.5" x 5.5"
- 4-side KenCoat overlay with corners

**2993224**

- 2-bolt – 2" on centers
- 3.5" x 5.5"
- 4-side KenCoat overlay without corners


**Model**  
**Horizontal Grinders**
**Part/Order Number**  
**1930338 (shown)**

- 2-bolt – 2" on centers
- 3.5" x 5.5"
- 6-side KenCoat overlay

**2434936**

- 2-bolt – 2" on centers
- 3.5" x 5.5"
- 8-side KenCoat overlay with face


**Model**  
**Horizontal Grinders**
**Part/Order Number**  
**2046932 Ripper (shown)**

- 2-bolt – 2" on centers
- 3.5" x 5.4"
- abrasion-resistant

**2394828 Ripper**

- 2-bolt – 2" on centers
- 3.5" x 5.4"
- impact-resistant



see fasteners on page 12

Bandit

CBI / CMI /  
Rexworks / Norkot

Diamond Z / Hogzilla /  
W.H.O. / FHE

Duratech

Morbark

Peterson

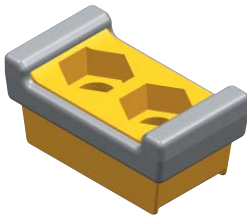
Vermeer

Precision Husky /  
Toro / Olathe

Packer / Rayco /  
FAE / ZEHR

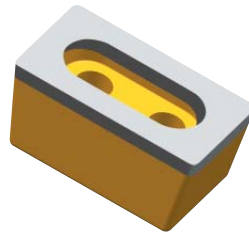
**Model**  
950 / 1000 / 1100 / 1200 / 2600 / 3600

- Part/Order Number**  
**1931517**
- 2-bolt – 1-5/16" on centers
  - 2" x 3.5"
  - 6-side KenCoat overlay
  - 1.5" mounted



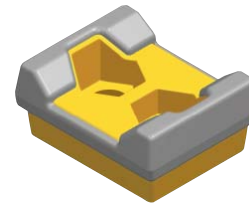
**Model**  
1100 / 1200 / 3600

- Part/Order Number**  
**1323300**
- 2-bolt – 1-5/16" on centers
  - 2" x 3.5"
  - KenCast technology
  - 1.5" mounted



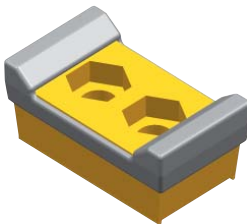
**Model**  
1200

- Part/Order Number**  
**3384637**
- 2-bolt – 1-1/2" on centers
  - 2.7" x 3.4"
  - 6-side KenCoat overlay
  - flat back



**Model**  
1200XL / 1250 / 1300 / 3800 / 4600XL

- Part/Order Number**  
**1855230**
- 2-bolt – 1-11/16" on centers
  - 2.8" x 4.8"
  - 6-side KenCoat overlay with rails



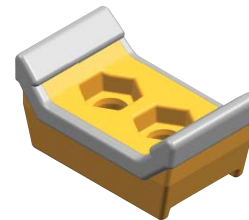
**Model**  
1200XL / 1250 / 1300 / 3800 / 4600XL

- Part/Order Number**  
**3134428**
- 2-bolt – 1-11/16" on centers
  - 3" x 5.1"
  - 8-side KenCoat overlay



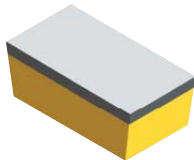
**Model**  
1200XL / 1250 / 1300 / 3800 / 4600XL

- Part/Order Number**  
**3645033 Knife Edge**
- 2-bolt – 1-11/16" on centers
  - 2.8" x 4.8" x 2.1"
  - 6-side KenCoat overlay with rails



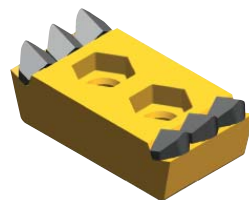
**Model**  
1200XL / 1250 / 1300 / 3800 / 4600XL

- Part/Order Number**  
**2638852**
- 2-bolt – 1-11/16" on centers
  - 2.5" x 4.8"
  - KenCast technology solid face (threaded 3/4"-16 lugs in back)



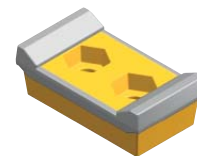
**Model**  
1200XL / 1250 / 1300 / 4600XL

- Part/Order Number**  
**2437966 Ripper**
- 2-bolt – 1-11/16" on centers
  - 2.8" x 5.1"
  - impact-resistant



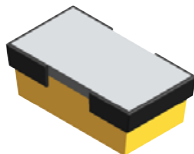
**Model**  
1400 / 1500

- Part/Order Number**  
**2271876**
- 2-bolt – 2" on centers
  - 2.8" x 5.3"
  - 6-side KenCoat overlay
  - flat back



**Model**  
1200XL / 1250 / 1300 / 3800 / 4600XL

- Part/Order Number**  
**3774512**
- 2-bolt – 1-11/16" on centers
  - 2.8" x 5"
  - KenCast technology with wraparound hardfacing



**Model**  
1400 / 1500

- Part/Order Number**  
**3127912 Ripper**
- 2-bolt – 2" on centers
  - 2.7" x 5.1"
  - impact-resistant
  - flat back



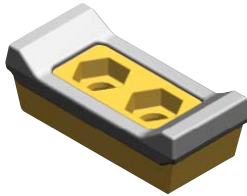
see fasteners on page 12



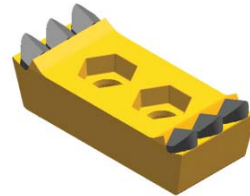
**Model**  
**1600 / 6600**

- Part/Order Number**  
**2604148 (shown)**
- 2-bolt – 2" on centers
  - 3" x 6.5"
  - 8-side KenCoat overlay
  - flat back

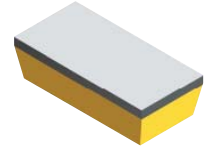
- 2604163**
- 2-bolt – 2" on centers
  - 3" x 6.5"
  - 6-side KenCoat overlay
  - flat back


**Model**  
**1600 / 6600**

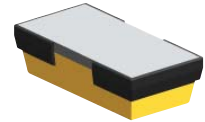
- Part/Order Number**  
**2607173 Ripper**
- 2-bolt – 2" on centers
  - 3" x 6.5"
  - impact-resistant
  - flat back


**Model**  
**1600 / 6600**

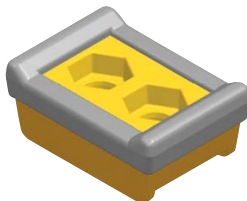
- Part/Order Number**  
**2885057**
- 2-bolt – 2" on centers
  - 3" x 6.5"
  - KenCast technology
  - solid face
  - flat back


**Model**  
**1600 / 6600**

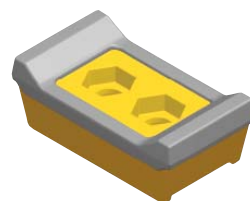
- Part/Order Number**  
**3838092**
- 2-bolt – 2" on centers
  - 3.3" x 6.5"
  - KenCast technology
  - solid face with wraparound hardfacing


**Model**  
**3600 / 4600**

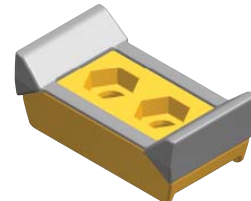
- Part/Order Number**  
**3117793**
- 2-bolt – 1-9/16" on centers
  - 2.8" x 4"
  - 8-side KenCoat overlay with rails


**Model**  
**5600 / 7600**

- Part/Order Number**  
**3077198**
- 2-bolt – 2" on centers
  - 3.3" x 6.3"
  - 8-side KenCoat overlay with rails

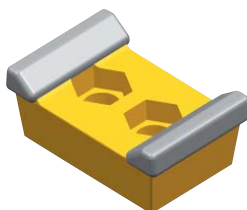

**Model**  
**5600 / 7600**

- Part/Order Number**  
**3644219 Knife Edge**
- 2-bolt – 2" on centers
  - 3.6" x 6.3" x 2.3"
  - 6-side KenCoat overlay with rails


**Model**  
**5600 (early models)**

- Part/Order Number**  
**1835079 (shown)**
- 2-bolt – 2" on centers
  - 3.5" x 5.5"
  - 4-side KenCoat overlay with corners

- 2993224**
- 2-bolt – 2" on centers
  - 3.5" x 5.5"
  - 4-side KenCoat overlay without corners


**Model**  
**5600 (early models)**

- Part/Order Number**  
**1930338 (shown)**
- 2-bolt – 2" on centers
  - 3.5" x 5.5"
  - 6-side KenCoat overlay

- 2434936**
- 2-bolt – 2" on centers
  - 3.5" x 5.5"
  - 8-side KenCoat overlay with face


**Model**  
**5600 (early models)**

- Part/Order Number**  
**2046932 Ripper (shown)**
- 2-bolt – 2" on centers
  - 3.5" x 5.4"
  - abrasion-resistant

- 2394828 Ripper**
- 2-bolt – 2" on centers
  - 3.5" x 5.4"
  - impact-resistant



see fasteners on page 12

Bandit

CBI / CMI /  
Rexworks / Norkot

Diamond Z / Hogzilla /  
W.H.O. / FHE

Duratech

Morbark

Peterson

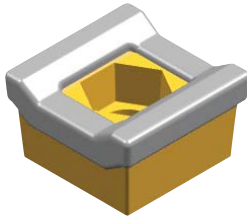
Vermear

Precision Husky /  
Toro / Olathe

Packer / Rayco /  
FAE / ZEHR

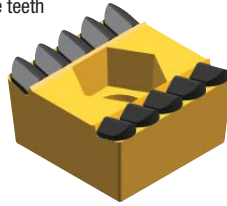
**Model**  
HC2400 / HC3400

- Part/Order Number**  
**2034217 (shown)**
- 1-bolt
  - 3" x 3"
  - 8-side KenCoat overlay with face and sides
- 1611573**
- 1-bolt
  - 3" x 3"
  - 6-side KenCoat overlay with face



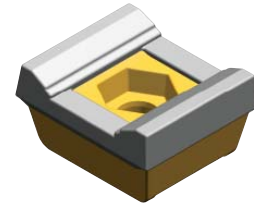
**Model**  
HC2400 / HC3400

- Part/Order Number**  
**2264823 Ripper (shown)**
- 1-bolt
  - 2.7" x 2.7"
  - impact-resistant
  - 10 carbide teeth
- 2254784 Ripper**
- for super-aggressive cutting
  - 1-bolt
  - 2.7" x 2.7"
  - impact-resistant
  - 6 carbide teeth



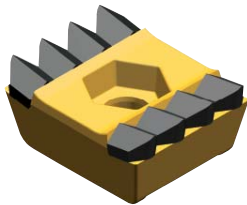
**Model**  
HC5400

- Part/Order Number**  
**2435473 (shown)**
- 1-bolt
  - 3.3" x 3.8"
  - 8-side KenCoat overlay with face and rails
- 1867779**
- 1-bolt
  - 3.3" x 3.8"
  - 6-side KenCoat overlay with rails



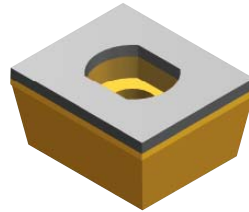
**Model**  
HC5400

- Part/Order Number**  
**2228270 Ripper (shown)**
- 1-bolt
  - 3.3" x 3.8"
  - abrasion-resistant
- 2250380 Ripper**
- 1-bolt
  - 3.3" x 3.8"
  - impact-resistant



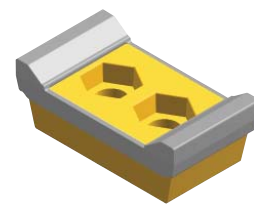
**Model**  
HC5400

- Part/Order Number**  
**1985773**
- 1-bolt
  - 3.3" x 3.8"
  - KenCast technology
  - flat back



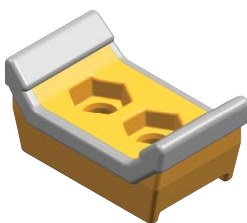
**Model**  
HC2700 / HC4700

- Part/Order Number**  
**2418497 (shown)**
- 2-bolt – 1-11/16" on centers
  - 2.8" x 5.1"
  - 6-side KenCoat overlay
  - flat back
- 2434940**
- 2-bolt – 1-11/16" on centers
  - 2.8" x 5.1"
  - 8-side KenCoat overlay with face
  - flat back



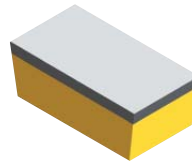
**Model**  
HC2700 / HC4700

- Part/Order Number**  
**3645033 Knife Edge**
- 2-bolt – 1-11/16" on centers
  - 2.8" x 4.8" x 2.1"
  - 6-side KenCoat overlay with rails



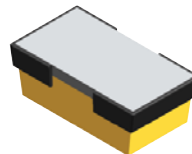
**Model**  
HC2700 / HC4700

- Part/Order Number**  
**2638852**
- 2-bolt – 1-11/16" on centers
  - 2.5" x 4.8"
  - KenCast technology solid face (threaded 3/4"-16 lugs in back)



**Model**  
HC2700 / HC4700

- Part/Order Number**  
**3774512**
- 2-bolt – 1-11/16" on centers
  - 2.8" x 5"
  - KenCast technology with wraparound hardfacing



**Model**  
HC2700 / HC4700

- Part/Order Number**  
**2437966 Ripper**
- 2-bolt – 1-11/16" on centers
  - 2.8" x 5.1"
  - impact-resistant

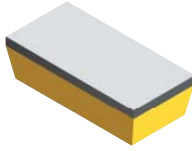


see fasteners on page 12

**Model**  
HC5700 / HC6700

**Part/Order Number**  
**2885057**

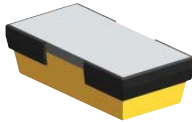
- 2-bolt – 2” on centers
- 3” x 6.5”
- KenCast technology solid face
- flat back



**Model**  
HC5700 / HC6700

**Part/Order Number**  
**3838092**

- 2-bolt – 2” on centers
- 3.3” x 6.5”
- KenCast technology solid face with wraparound hardfacing



**Model**  
HC5700 / HC6700

**Part/Order Number**  
**2604148 (shown)**

- 2-bolt – 2” on centers
- 3” x 6.5”
- 8-side KenCoat overlay
- flat back

**2604163**

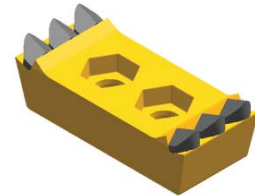
- 2-bolt – 2” on centers
- 3” x 6.5”
- 6-side KenCoat overlay
- flat back



**Model**  
HC5700 / HC6700

**Part/Order Number**  
**2607173 Ripper**

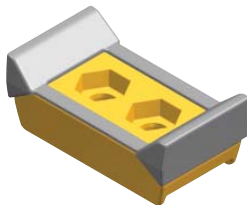
- 2-bolt – 2” on centers
- 3” x 6.5”
- impact-resistant
- flat back



**Model**  
HC5700 / HC6700

**Part/Order Number**  
**3644219 Knife Edge**

- 2-bolt – 2” on centers
- 3.6” x 6.3” x 2.3”
- 6-side KenCoat overlay with rails



**Model**  
HC7400

**Part/Order Number**  
**2434936 (shown)**

- 2-bolt – 2” on centers
- 3.5” x 5.5”
- 8-side KenCoat overlay with face

**1930338**

- 2-bolt – 2” on centers
- 3.5” x 5.5”
- 6-side KenCoat overlay

**1835079**

- 2-bolt – 2” on centers
- 3.5” x 5.5”
- 4-side KenCoat overlay with corners

**2993224**

- 2-bolt – 2” on centers
- 3.5” x 5.5”
- 4-side KenCoat overlay without corners



**Model**  
HC7400

**Part/Order Number**  
**2046932 Ripper (shown)**

- 2-bolt – 2” on centers
- 3.5” x 5.4”
- abrasion-resistant

**2394828 Ripper**

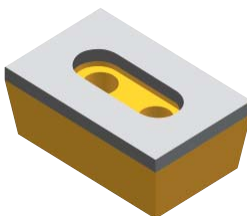
- 2-bolt – 2” on centers
- 3.5” x 5.4”
- impact-resistant



**Model**  
HC7400

**Part/Order Number**  
**1981905**

- 2-bolt – 2” on centers
- 3.5” x 5.5”
- KenCast technology



see fasteners on page 12

Bandit  
CBI / CMI / Rexworks / Norkot  
Diamond Z / Hogzilla / W.H.O. / FHE  
Duratech  
Morbarck  
Peterson  
Vermeer  
Precision Husky / Toro / Olathe  
Packer / Rayco / FAE / ZEHR

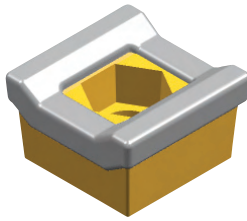
**Model**  
TG-400 / 525

Part/Order Number with Hammer Body  
**2034217 (shown)**

- 1-bolt
- 3" x 3"
- 8-side KenCoat overlay with face and sides

**1611573**

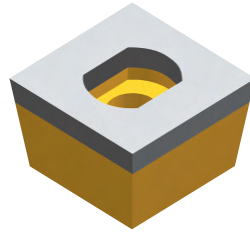
- 1-bolt
- 3" x 3"
- 6-side KenCoat overlay with face



**Model**  
TG-400 / 525

Part/Order Number with Hammer Body  
**1313612 (MTO)**

- 1-bolt
- 3" x 3"
- KenCast technology



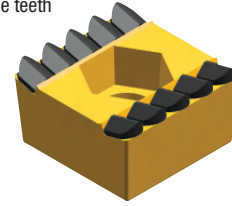
**Model**  
TG-400 / 525

Part/Order Number with Hammer Body  
**2264823 Ripper (shown)**

- 1-bolt
- 2.7" x 2.7"
- impact-resistant
- 10 carbide teeth

**2254784 Ripper**

- for super-aggressive cutting
- 1-bolt
- 2.7" x 2.7"
- impact-resistant
- 6 carbide teeth



**Model**  
TG-5000 / 9000 / HG-365 / 525 / 4000 / 6000

Part/Order Number with Duplex Drum  
**3880080 (shown)**

- 1-bolt
- 3.3" x 3.8"
- 8-side KenCoat overlay with sides and rails

**3880079**

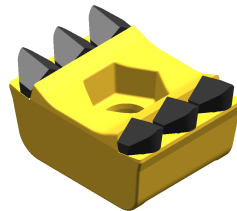
- 1-bolt
- 3.3" x 3.8"
- 6-side KenCoat overlay with rails



**Model**  
HG-365 / 525 / 4000 / 6000

Part/Order Number with Duplex Drum  
**3901860 Ripper**

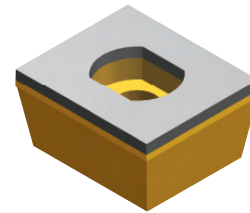
- 1-bolt
- 3" x 3.7"
- impact-resistant
- with rails



**Model**  
TG-9000 / HG-365 / 525 / 4000 / 6000

Part/Order Number with Duplex Drum  
**1985773**

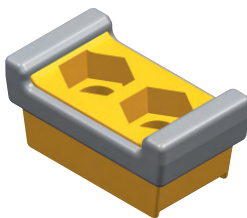
- 1-bolt
- 3.3" x 3.8"
- KenCast technology
- flat back



**Model**  
TG-5000 / HG-200

Part/Order Number with Duplex Drum  
**1931517**

- 2-bolt – 1-5/16" on centers
- 2" x 3.5"
- 6-side KenCoat overlay
- 1.5" mounted



**Model**  
TG / HG

Part/Order Number with Duplex Drum  
**1323300**

- 2-bolt – 1-5/16" on centers
- 2" x 3.5"
- KenCast technology
- 1.5" mounted



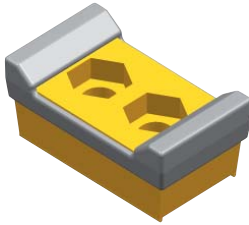
**“Kennametal carbide grinder tips have sliced our tool-replacement costs by almost 70%!”**

**Terry Kane, Owner**  
Georgia Mountain Grinding & Recycling  
Blairsville, Georgia

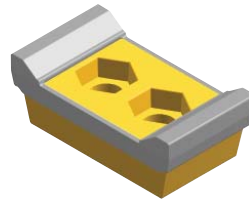
see fasteners on page 12

**Model**  
**TG-400 / 525**

**Part/Order Number** with Hammer Body  
**1855230**  
 • 2-bolt – 1-11/16" on centers  
 • 2.8" x 4.8"  
 • 6-side KenCoat overlay with rails


**Model**  
**TG-400 / 525 / 7000**

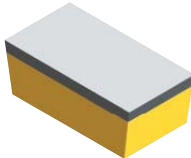
**Part/Order Number** with Hammer Body  
**2418497 (shown)**  
 • 2-bolt – 1-11/16" on centers  
 • 2.8" x 5.1"  
 • 6-side KenCoat overlay  
 • flat back  
**2434940**  
 • 2-bolt – 1-11/16" on centers  
 • 2.8" x 5.1"  
 • 8-side KenCoat overlay with face  
 • flat back


**Model**  
**TG-400 / 525**

**Part/Order Number** with Hammer Body  
**2437966 Ripper**  
 • 2-bolt – 1-11/16" on centers  
 • 2.8" x 5.1"  
 • impact-resistant


**Model**  
**TG-400 / 525**

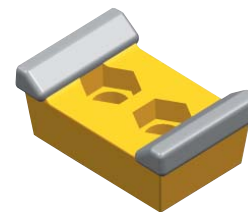
**Part/Order Number** with Hammer Body  
**2638852**  
 • 2-bolt – 1-11/16" on centers  
 • 2.5" x 4.8"  
 • KenCast technology solid face (threaded 3/4"-16 lugs in back)


**Model**  
**TG-800 / 1000 / 8000 / 9000**

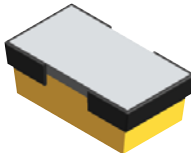
**Part/Order Number** with Hammer Body  
**1930338 (shown)**  
 • 2-bolt – 2" on centers  
 • 3.5" x 5.5"  
 • 6-side KenCoat overlay  
**2434936**  
 • 2-bolt – 2" on centers  
 • 3.5" x 5.5"  
 • 8-side KenCoat overlay with face


**Model**  
**TG-800 / 1000 / 8000 / 9000**

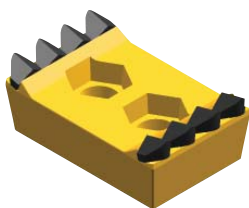
**Part/Order Number** with Hammer Body  
**1835079 (shown)**  
 • 2-bolt – 2" on centers  
 • 3.5" x 5.5"  
 • 4-side KenCoat overlay with corners  
**2993224**  
 • 2-bolt – 2" on centers  
 • 3.5" x 5.5"  
 • 4-side KenCoat overlay without corners


**Model**  
**TG-400 / 525**

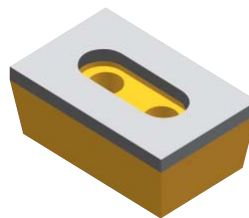
**Part/Order Number** with Hammer Body  
**3774512**  
 • 2-bolt – 1-11/16" on centers  
 • 2.8" x 5"  
 • KenCast technology with wraparound hardfacing


**Model**  
**TG-800 / 1000 / 8000 / 9000**

**Part/Order Number** with Hammer Body  
**2046932 Ripper (shown)**  
 • 2-bolt – 2" on centers  
 • 3.5" x 5.4"  
 • abrasion-resistant  
**2394828 Ripper**  
 • 2-bolt – 2" on centers  
 • 3.5" x 5.4"  
 • impact-resistant


**Model**  
**TG-800 / 1000 / 8000 / 9000**

**Part/Order Number** with Hammer Body  
**1981905**  
 • 2-bolt – 2" on centers  
 • 3.5" x 5.5"  
 • KenCast technology



see fasteners on page 12

Bandit  
 CBI / CMI / Rexworks / Norkot  
 Diamond Z / Hogzilla / W.H.O. / FHE  
 Duratech  
 Morbark  
 Peterson  
 Vermeer  
 Precision Husky / Toro / Olathe  
 Packer / Rayco / FAE / ZEHR

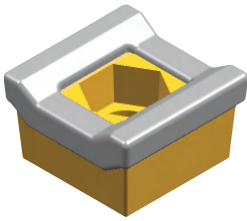
**Model**  
837 / 867 / 1000 / 2000

**Part/Order Number**  
**2034217 (shown)**

- 1-bolt
- 3" x 3"
- 8-side KenCoat overlay with face and sides

**1611573**

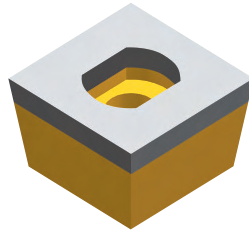
- 1-bolt
- 3" x 3"
- 6-side KenCoat overlay with face



**Model**  
837 / 867 / 1000 / 2000

**Part/Order Number**  
**1313612 (MTO)**

- 1-bolt
- 3" x 3"
- KenCast technology



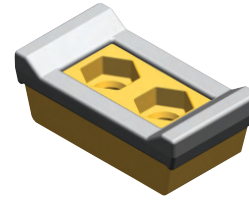
**Model**  
4000 / 5000 / 5100

**Part/Order Number**  
**2434940 (shown)**

- 2-bolt – 1-11/16" on centers
- 2.8" x 5.1"
- 8-side KenCoat overlay with face
- flat back

**2418497**

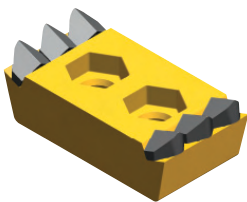
- 2-bolt – 1-11/16" on centers
- 2.8" x 5.1"
- 6-side KenCoat overlay
- flat back



**Model**  
4000 / 5000 / 5100

**Part/Order Number**  
**2437966 Ripper**

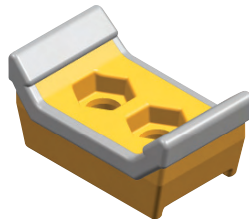
- 2-bolt – 1-11/16" on centers
- 2.8" x 5.1"
- impact-resistant



**Model**  
4000 / 5000 / 5100

**Part/Order Number**  
**3645033 Knife Edge**

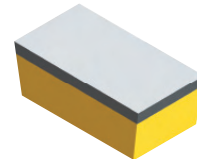
- 2-bolt – 1-11/16" on centers
- 2.8" x 4.8" x 2.1"
- 6-side KenCoat overlay with rails



**Model**  
4000 / 5000 / 5100

**Part/Order Number**  
**2638852**

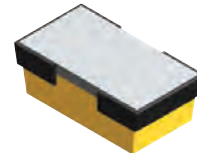
- 2-bolt – 1-11/16" on centers
- 2.5" x 4.8"
- KenCast technology solid face (threaded 3/4"-16 lugs in back)



**Model**  
4000 / 5000 / 5100

**Part/Order Number**  
**3774512**

- 2-bolt – 1-11/16" on centers
- 2.8" x 5"
- KenCast technology with wraparound hardfacing



## Now offering premium quality fasteners for your grinders!

**EXPERIENCED STAFF!**

**FAST DELIVERY!**

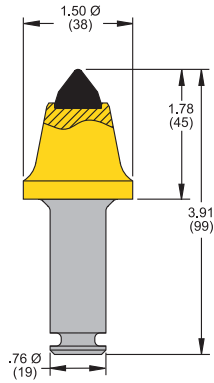


Order from stock by Noon EST for same-day shipment.

**Call Customer Service at 800.458.3608 or 866.692.5434.**

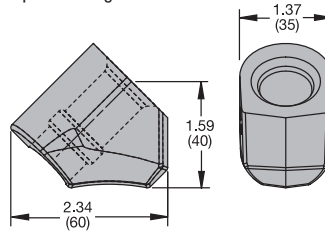
**Packer**

**Part/Order Number**  
**1010910 C3R Tool**  
 • for soft to medium or abrasive cutting conditions



**Packer**

**Part/Order Number**  
**1012278 C10 Block**  
 • for light-duty applications  
 • slim-profile design



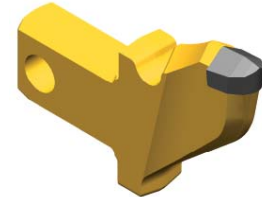
**Packer**

**Part/Order Number**  
**1012120 C3R Retainer**  
 • lock ring



**Model**  
**Forestry Mowers**

**Part/Order Number**  
**1785758**  
 • mower tip assembly  
 • impact-resistant



**Model**  
**4000**

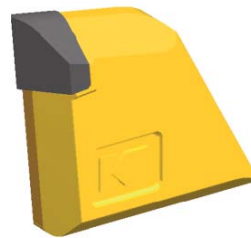
**ZEHR**

**Part/Order Number**  
**2271876**  
 • 2-bolt – 2" on centers  
 • 2.8" x 5.3"  
 • 6-side  
 KenCoat overlay  
 • flat back



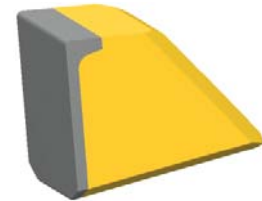
**Weld-On Accessories**

**Part/Order Number**  
**2882750 Shark Tooth**  
 • for drum rotors  
 • prevents material build-up on drum  
 • impact-resistant



**Weld-On Accessories**

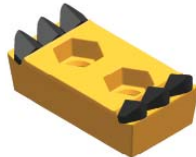
**Part/Order Number**  
**2492967 Shark Tooth**  
 • for drum rotors  
 • for severe applications  
 • prevents material build-up on drum  
 • KenCast technology



**Model**  
**4000**

**ZEHR**

**Part/Order Number**  
**3127912 Ripper**  
 • 2-bolt – 2" on centers  
 • 2.7" x 5.1"  
 • impact-resistant  
 • flat back



**Weld-on wear protection!**

**ELIMINATES COSTLY HARDFACING!**



KenCast is an exclusive patented Kennametal product. We take tungsten carbide particles of varying sizes and metallurgically bond them to air-hardened steel. This combination of steel's durability with carbide's toughness creates a wear part that withstands extremely abrasive and high-impact applications.

KenCast helps your equipment last longer... in many cases, a lot longer depending on the application and operating conditions. That means you save money with reduced downtime, repair costs, and inventory. We keep our customers competitive and productive!

**Kennametal Inc. (USA)**

Mining and Construction Division  
Phone: 800.458.3608

**Kennametal Australia Pty. Ltd.**

Phone: (61) 7 3801 5844

**Kennametal Inc. (Canada)**

Phone: 800.458.3608

**Kennametal Xuzhou Ltd. (Beijing)**

Representative Office Phone: (86) 10 8563 4883

**Kennametal Inc. (France)**

Phone: (33) 387 8965 93

**Kennametal GmbH & Co. KG (Europe)**

Phone: (49) 6172 28 52 20

**Kennametal Japan Ltd. (Tokyo)**

Phone: (81) 3 3820 2855

**Kennametal Korea Ltd.**

Phone: (82) 2 2109 6100

**Kennametal (Malaysia) Sdn. Bhd.**

Phone: (6) 03 5569 9080

**Kennametal Sp. z O.O. (Poland)**

Phone: (48) 32 739 4352

**Kennametal (Singapore) Pte. Ltd.**

Phone: (65) 6 265 9222

**Kennametal South Africa Pty. Ltd.**

Phone: (27) 11 397 3540

**Kennametal Hardpoint Taiwan Inc.**

Phone: (886) 2 2523 3660

**Kennametal (Thailand) Co. Ltd.**

Phone: (662) 377 1501

# Grinder Tips

**Kennametal**

The proven global leader in the design, manufacture, implementation, and sale of premium-quality tooling systems for underground and surface mining, road rehabilitation, aggregates production, and waste recycling!

**Engineering and Customer Support Hours:  
8am to 7pm EST**

**Customer Service:  
800.458.3608 (USA and Canada)  
866.692.5434 (USA only)**

[www.kennametal.com](http://www.kennametal.com)

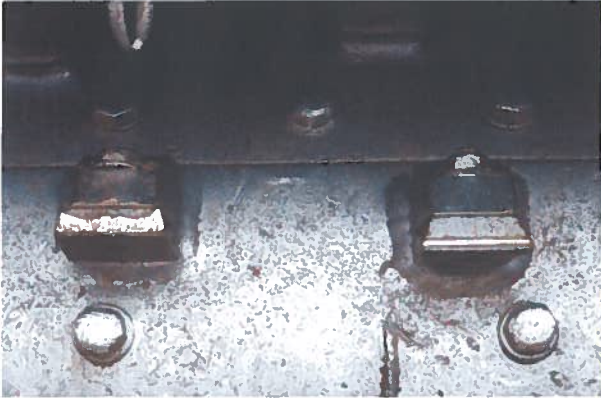


Kennametal Inc.  
1600 Technology Way | Latrobe, PA 15650 USA



Engineering Your  
Competitive Edge

## IN GRINDING AND RECYCLING



*Kennametal carbide-edged grinder tips performed as effectively after 23 hours as they did during start-up!*



***“Kennametal carbide grinder tips have sliced our tool-replacement costs by almost 70%!”***

Terry Kane, Owner  
Georgia Mountain Grinding & Recycling, Blairsville, Georgia

**GA MTN.  
GRINDING & RECYCLING**

“Our workload is truly diverse — grinding or recycling everything from stumps, brush, asphalt, concrete, bricks, even green waste. Our specialty, though, is producing landscape mulch from wood. Customers bring their materials to us or we go on-site. Every day presents a different challenge.

Until a few months ago, we used tool-steel bits exclusively on our CMI 425G machine. Then, during a visit to a Kennametal tradeshow booth, I learned first-hand just what their carbide-edged products could do for me. Since the switch, we've realized at least a 20-to-1 productivity and efficiency improvement — minimum — on every single job... no matter how unusual or difficult.

A recent major project clearly demonstrated our Kennametal time and money savings. To start, we had to clear five acres of hardwoods (60% hickory) to make a roadway to install a water tank. In the past, this kind of work would have easily taken us up to 12 hours to cut and grind an acre. Plus, we would have had to replace our steel teeth every three hours. But, with Kennametal carbide grinder tips, we finished an acre in less than four hours — and, over the full length of the job, never had to change out even one tool! Best of all, the Kennametal bits performed just as well after 23 hours as they did during their initial run.

One key statistic tells our story: In less than a year, we've sliced our tool-replacement costs by almost 70%! Not to mention our drastically increased uptime: Now, with very few exceptions, we only stop our machine to refuel... regardless of the debris or operation we undertake.”

**Kennametal will significantly boost your grinding and recycling output!**

***Let us prove it.***

**Call 800/458-3608 or visit [www.kennametal.com](http://www.kennametal.com)**

 **KENNAMETAL**  
*Engineering Your Competitive Edge*

# PROVEN.



*In even the most demanding jobs, a set of Kennametal KenCast teeth will last at least 90 hours on Pennsy Supply's Peterson Pacific HC2400B machine — for a more than 1000% productivity gain versus competitive tools!*

## IN SHINGLE GRINDING.



**“Kennametal's  
KenCast™ shingle  
grinder teeth  
deliver a uniform  
end product for a  
longer time.”**

**Bryan Pecht**  
Vice President — Operations  
Pennsy Supply Inc.  
Harrisburg, PA

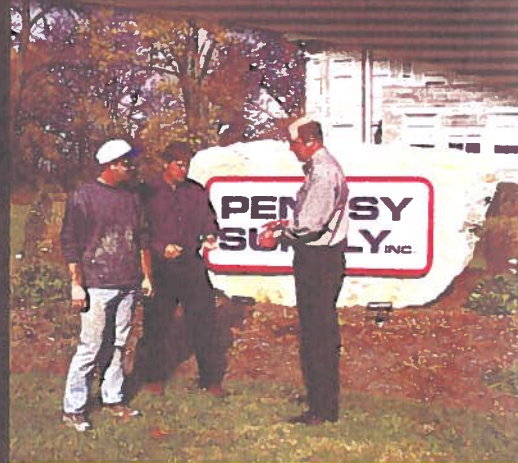
**PENNSY  
SUPPLY INC.**



**T**he shingles we grind are incredibly abrasive — they're 20 percent liquid asphalt, with fiberglass backing and a hard stone coating. We were lucky to get eight to, on very rare occasions, 30 hours from a set of teeth...and that was only if the outside temperature stayed below 82° F. That production rate, of course, was unacceptable. We needed to find a cutting tip that could keep pace with our Peterson Pacific® HC2400B (580 hp) machine.\*

Our Peterson rep suggested we contact Kennametal. Within a very short time, Kennametal's product manager visited us, observed our operating conditions and equipment, and immediately supplied tools and technical support to enable us to vastly improve our shingle-grinding efficiency and performance. In fact, each set of Kennametal KenCast teeth actually last an average of 90 hours...and, just as critically, deliver a uniform end product for a longer period of time versus any of our previously used tools!

\*equipped with a bolt-on shingle-grinding package



*(left to right): Kevin Smith, Pennsy Supply's Quarry Superintendent; Stu Gamble, Regional Sales Manager for Peterson Pacific; and Jeff Hickey, Kennametal's Product Manager for Forestry and Recycling Products, discuss the KenCast tip's exceptional wear life and consistent performance in even the most abrasive shingle-grinding applications.*

With Kennametal, our price per tip has been drastically reduced, too. Plus, Kennametal listens to us...and provides innovative tool designs that yield custom particle types, depending upon our requirements.

Consistent gradation size, top-quality and cost-effective tips, the industry's premier service, and a constant willingness to work closely with us and our machine manufacturer to ensure that our shingle-grinding business stays profitable: That's what a single phone call to Kennametal has meant to us."

***We can significantly improve your crushing and grinding productivity and profitability, too.***

***Let us prove it.***

**KENNAMETAL®**

Call 800/564-9489 or visit  
[www.kennametal.com](http://www.kennametal.com)