



# Road Construction Drums & Block Systems



DRILLING | TRENCHING | ROAD REHABILITATION

# Proven Reliability – Unparalleled Productivity.

## Engineering Design Capabilities



### Drum-Lacing Designs

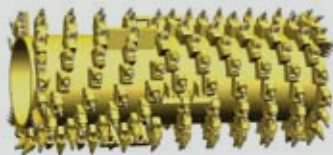
*Engineered specifically to optimize your road construction drums productivity and profitability!*

- computer-engineered with synchronized lacing
- view the road pattern at different speeds and RPMs before you purchase your drum
- our software program creates and maps expertly balanced drums
- ensure optimum placement of cutting tools

### Specific Application Designs:



Profile Milling



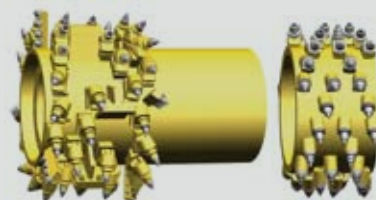
Standard Milling



Micro Milling



Reclamation/Stabilization

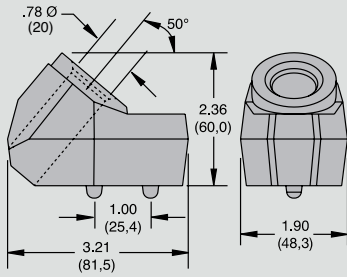


Specialty

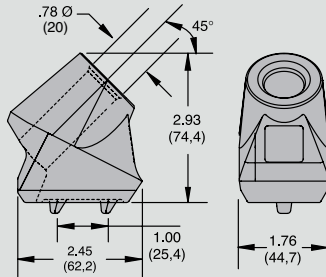
# Weld-On Blocks

## For 20 mm (.76") Shank Tools

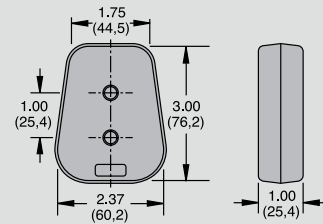
**C10AMC Block**  
1012285



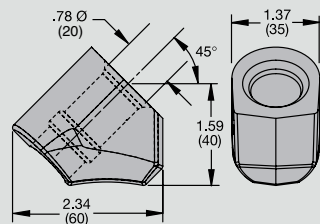
**C10LG Block**  
1012345



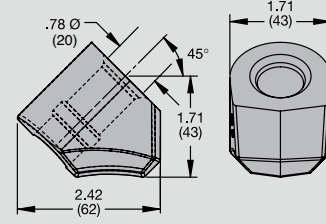
**C10AM/LG Base**  
1012364



**C10 Block**  
1012278

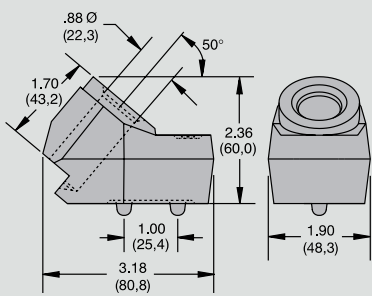


**C10HD Block**  
1012289

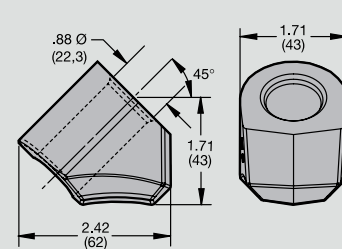


## For 22 mm (.86") Shank Tools

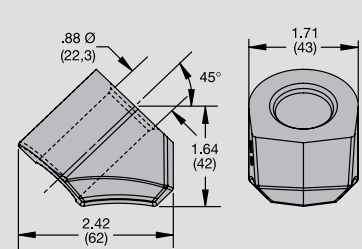
**C87RL Block**  
1012298



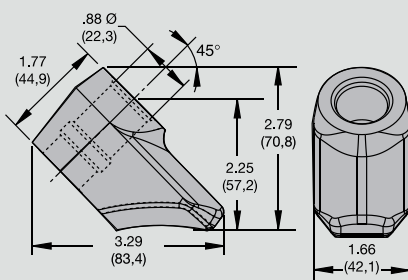
**C87HDS Block**  
1012290



**C87E Block**  
1012365



**SLB01 Block**  
1858587

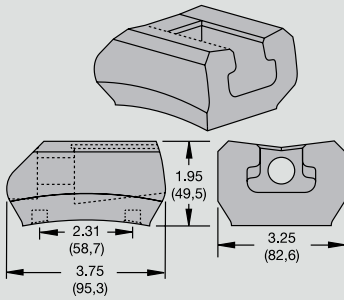


# Quick-Change Blocks

For 20 mm (.76") and 22 mm (.86") Shank Tools

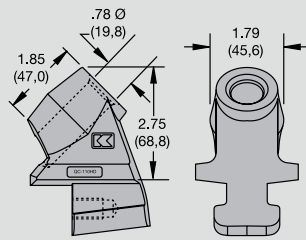
## QC100 Base 1011565

For machines with more than 400 horsepower.



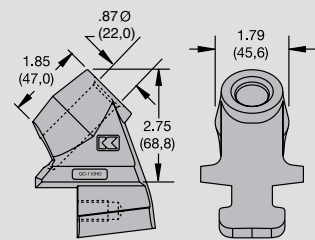
## QC110HD Holder (for 20mm tools) 1013348

For machines with more than 400 horsepower.



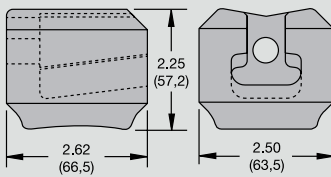
## QC187HD Holder (for 22mm tools) 1588922

For machines with more than 400 horsepower.



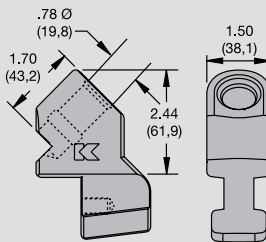
## QC110B Base 1012283

For machines with less than 400 horsepower.



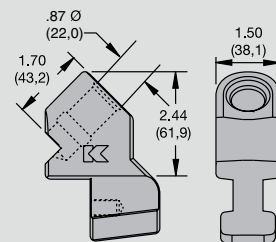
## QC110H Holder (for 20mm tools) 1012284

For machines with less than 400 horsepower.



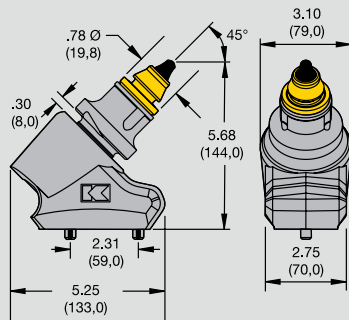
## QC110-87 Holder (for 22mm tools) 1012293

For machines with less than 400 horsepower.



## KPF301 Block Assembly

Engineered for unmatched durability.



## KPF303R Sleeve (for 20mm tools) 3545505

## KPF303-87 Sleeve (for 22mm tools) 2497314

## KPF301 Base 1873505

# Road Construction Drums

## Our long-life new or rebuilt drums deliver exceptional performance and profitability!

- computer-engineered tuned designs with synchronized lacing
- end rings ensure reduced wear and straight cuts
- custom-built to meet your operating requirements
- Pro-Fit™ or Quick-Change™ block systems provide proven results
- balanced to reduce machine vibration
- matched to any major OEM specifications
- specially constructed

## Each drum come standard with its own ID plate, serial number, and certificate of authenticity. Plus:

- Kennametal Drum Warranty
- free set of premium start-up tools
- complete maintenance tool kit:
  - 2 wedge pullers
  - 1 flex drill
  - 1 bucket spare sleeve
  - 1 sleeve-removal tool
  - an official Kennametal hat
  - 5% off your next accessories purchase\*

(\*excludes teeth)



CERTIFICATE

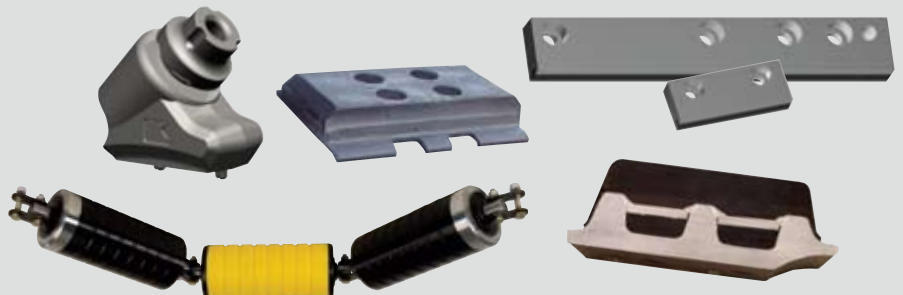


ID PLATE



## We also offer:

- kicker plates/paddles, edge cutters, blocks, sleeves, and KCWB-0406 kicker plate castings
- wear castings
- planer/scrapper blades
- track pads and track pad hardware
- pullers, punches, and all accessory tools



## **Kennametal**

The proven global leader in the design, manufacture, implementation, and sale of premium-quality tooling systems for underground and surface mining, road rehabilitation, aggregates production, and waste recycling!

### **United States / Canada / Mexico**

Phone: 800.458.3608

Fax: 800.521.3319

[mcs-na.service@kennametal.com](mailto:mcs-na.service@kennametal.com)

### **Germany / European Served Area**

Phone: (49) 6172 737 498

Fax: (49) 6172 737 42 453

[mcs-ag.service@kennametal.com](mailto:mcs-ag.service@kennametal.com)

### **Poland / Slovakia / Baltics**

Phone: (48) 32 47 89 100

Fax: (48) 32 47 89 112

### **Brazil / Latin America**

Phone: (55) 19 3936 9200

Fax: (55) 19 3936 9201

### **Argentina**

Phone: (54) 011 4719 0700

Fax: (54) 011 4719 6116

### **Chile**

Phone: (56) 2 2641177

Fax: (001) 888 442 4964

### **China**

Phone: (86) 400 6501 388

Fax: (86) 10 8561 5263

### **Japan**

Phone: (81) 3 3820 2855

Fax: (81) 3 3820 2800

### **Korea**

Phone: (82) 2 2109 6967

Fax: (82) 2 2109 6981

### **Thailand / Singapore / Vietnam / Philippines**

Phone: (66) 2642 3455

Phone: (66) 2246 8025 – 32

Fax: (66) 2641 2736 – 8

### **Malaysia / Indonesia**

Phone: (6) 03 5569 9080

Fax: (6) 03 5569 0080

### **India**

Phone: (91) 80 2839 4321

Phone: (91) 80 2219 8444

Fax: (91) 80 2839 1300

[bangalore.information@kennametal.com](mailto:bangalore.information@kennametal.com)

### **Australia / New Zealand**

Phone: (61) 7 3801 5844

Fax: (61) 7 3801 5826

[sydney.service@kennametal.com](mailto:sydney.service@kennametal.com)

### **South Africa / Sub Saharan Area**

Phone: (27) 11397 3540

Fax: (27) 11397 3222



Kennametal Inc.  
1600 Technology Way  
Latrobe, PA 15650  
USA

[WWW.KENNAMETAL.COM](http://WWW.KENNAMETAL.COM)